

# FRANKLINvets update

December 2010

## New Appointments to our Farm Service Veterinary Team

### Ilyse McMillan BVSc

I am a new graduate from Massey University and will be joining the Franklin Vets Pukekohe team in December as a farm vet. I chose a production animal focus for my final year of study and am interested in all areas of large animal practice, especially dairy. I spent most of my school years in the Wairarapa and in my spare time enjoy camping, bush walks and music. I am getting married in Masterton in December and after 5 long years of study I am looking forward to starting my career and married life in Pukekohe. I look forward to meeting the practice's clients soon.



### Paula O'Reilly BSc (Agric), BVSc

I was born to Kiwi and South African parents and raised in South Africa. I moved to New Zealand in 2002 after completing a BSc in Agriculture, to enrol at Massey in the vet programme. After graduating in 2007, I worked in the Manawatu at Totally Vets, based at their Feilding clinic, doing a mix of large and small animal veterinary work.

My husband, Dan, is a helicopter pilot instructing at Ardmore Airfield. We were married in January 2009 and moved up to Auckland in October of this year after 3 months flitting around the Mediterranean, consuming far too much good wine and food on our long-awaited OE!

We are currently in the process of buying a house and loving the amazing weather up here, after 9 years of grey Manawatu skies. I am based at Franklin Vets Te Kauwhata branch.

### Competition Winners

**Winners at Clevedon A&P Show :** Gina Auld (Cat Pack), Claudia Lyons (Pony Pack) Rebecca Morris-Wilton (Pony Pack), Cheryl Wright (Lifestyle Pack), Elizabeth Roberts (Equine First Aid Kit).

### Winners of the Virbac Pampler Pack:

Deidre (Te Atatu Farms, Huntly), Julie Laingberg (right) (Laingberg Holdings, Te Kauwhata), Lisa Ritchie (Pukekohe)



The team at Franklin Vets invite you to join us for our Christmas BBQ

**Te Kauwhata** Monday 20th Dec 5:30pm  
**Taupiri** Wednesday 8th Dec 5:00pm  
**Waiuku** Tuesday 21st Dec 11:00am - 2:00pm  
**Papakura** Wednesday 8th Dec 11:30am - 2:30pm  
**Pukekohe** Wednesday 22nd Dec 11:00am - 3:00pm

### INSIDE THIS ISSUE

New appointments to our farm services veterinary team

Franklin Vets Christmas BBQ Invite

Competition Winners

New reproductive packages

New heifer weighing service

Planning for next season's inductions starts now!

Are you on top of mastitis or is it on top of you?

Do slow cows keep you in the shed?

"No Hoof, No Horse!" Beware this laminitis season

Monitoring can save you \$\$\$



### 2011 AUCKLAND/HAURAKI DAIRY INDUSTRY AWARDS

- Early bird entries go in the draw to win a Honda bike. Ends 10th Dec. Entries close 24th Dec.

Passion for Progression



FRANKLINvets

## NEW Reproductive Packages

Jason Fayers BVM&S Cert CHP, Mark Hosking BVSc MACVSc, David Hawkins BVSc

Pregnancy testing is about far more than just finding out which cows are empty.

**Dairy NZ have shown that herd repro performance is a key driver of profitability.** Collecting and analysing accurate scanning data allows you to benchmark your herd's performance, and identify the economic potential for improvement.

**Over the last few years, we have made a significant financial and time commitment** to providing you with quality scanning services with our backpack scanners, data entry and analysis using Infovet or Mindapro, and consultancy services through Dairy NZ's InCalf program.

We have progressively enrolled more and more clients into InCalf and farmers who have embraced this system have seen significant financial gains.

**If you want an insight into how InCalf works,** without diving in, we are launching the following 2 packages this scanning season:

### Fertility Focus Report Analysis

- Identifies overall performance with a dollar figure put on any gap in performance for your herd

- Identifies which management factors are impacting repro performance in your herd
- Lists what the likely key factors are that are impacting on these problem areas

### Detailed Reproductive Analysis

- Identifies areas of underperformance,** and from your herd's data identifies specific management factors in your herd that need to be improved
- Economic analysis** of these individual areas such as calving spread or bull performance. This allows you to rank the problems in order of impact and make cost based decisions on how to correct them
- Provides an action plan** specific to your herd to take you forward
- If you choose to sign up to InCalf, this package can be used as the first consult in the program

**We strongly believe that collecting and analysing accurate PD data is the first step in improving your herd's fertility.**

Our vets are looking forward to discussing these packages further with you at scanning time, but in the interim, if you have any questions, please give us a call.

## Planning for next season's inductions starts now!

The adverse publicity that the TVNZ reports on induction of dairy cattle brought to the attention of the general public of NZ earlier this season may have been sensational journalism at its inglorious height, but nevertheless will serve to ensure that inductions remain on the list of closely watched activities. With this in mind it is in farmers' best interests to proactively manage reliance on inductions out of their farming systems.

Currently industry guidelines allow for a maximum of 8% of a herd to be induced in the 2011 season. This is a maximum of 24 cows for a 300 cow herd. To ensure your farm does not get caught with the decreasing limits, plan now.

- Ensure sufficient bull power is present to maximise post-A.I. conception rates
- Pregnancy test early to predict empty rates and late calving rates
- With this information set an appropriate date for mating end and stick to it
- Source replacements to cover predicted empty rates and culling requirements

*Franklin Vets can assist with preparation for 2011 now through interim reproductive analysis, early pregnancy testing and advice. Call us now.*

## NEW Heifer Weighing Service

Jason Fayers BVM&S Cert CHP, Mark Hosking BVSc MACVSc, David Hawkins BVSc

Did your heifers get hammered by the drought last year?

**Did you know a 10% gap in live weight at calving in your heifers costs \$90.00 per head in decreased milk production and fertility?**

We have seen numerous examples of heifers being under grown and have witnessed the effects on fertility and production.

Very often heifer rearing is a neglected part of dairy farming, yet everyone knows that their heifers are the future of their business!

**There are many good reasons** to make sure your heifers don't suffer a growth check this summer as feed availability and quality fall:

- The phasing out of inductions means bringing early-calving, well-grown heifers into your herd is vital for tightening up calving spread
- A heifer that calves late in her first year and is mated late after her first calving is likely to be a late calver for the rest of her life!

- Having well-grown early-calving heifers is vital for increasing submission rate and reducing non-cycler treatment rate

Unless your heifers are being reared on a weight gain contract, or you are weighing them yourself at key times, our heifer weighing service could help you to save thousands of dollars!

Just because animals are in reasonable body condition, it doesn't mean they are hitting their targets.

### Don't trust your eye!

For just \$95 per hour plus mileage, we are providing a technician heifer weighing service.

**This includes** a report detailing the average weight and range of your stock, their target body weights and, where there is a gap, a cost analysis of failing to close this gap.

*If you would like to know more, or want to make a booking, please give us a call.*



### Fishing Trip 6 November

On 6th November Franklin Vets and Pfizer Animal Health took a group of farmers who had purchased Cydectin Pour On fishing out of Raglan on "Maverick".

The day was hugely successful and enjoyable.

Two notable highlights being Mark Ramsay a bull farming client from Huntly catching a 26.3lb snapper (pictured) the heaviest snapper ever caught off the boat in its 11 year history.

The second being Tony Cocker jumping overboard to recover his rod before pulling in the 16lb snapper which had pulled it overboard.

**Zee Tags** Purchase between now and April and go in the draw to win a Powerbuilt Tool Chest



## Are You on Top of Mastitis or is it on Top of You?

David Hawkins, BVSc.

We are past the peak of production now and heading into hopefully the broad shoulder. Now is the time to be looking at your BMSCC and clinical mastitis rate to determine whether or not mastitis will reduce your ability to milk later in the season.

### From now on SCC on farms begins a slow rise.

Unless there are significant changes made the best indicator of the BMSCC of a herd is what it was last year. (See graph below of three consecutive seasons on farm). So if you are sitting around last season's BMSCC then you can expect this season's BMSCC to rise at around the same rate. If you are currently lower than this time last season then you can expect the BMSCC to rise a little later than last season. However if your BMSCC is starting to rise ahead of last season's then you will have less leeway when the summer comes.

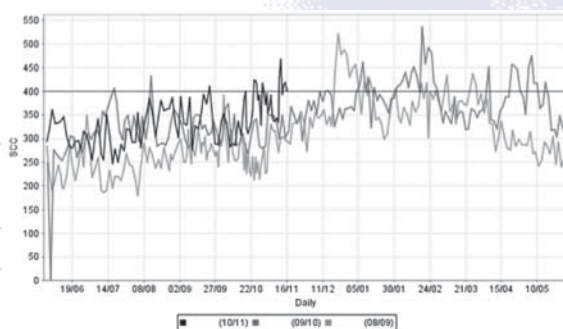
BMSCC rises post-peak are often put down to the dilution effect of reducing yields. While there is an element of truth in this, the vast majority of SCC elevation past peak is still attributable to infection of the udder with bacteria.

### Identifying causes of infection at this stage and being proactive before the summer arrives can:

- Slow down the BMSCC rise allowing more cows to milk for longer
- Prevent new infections establishing in valuable clean cows

- Provide you with more choices about who and when to dry-off
- Reduce the risk and cost of BMSCC grades

**Franklin Vets offers a "Grade Busting Service"** to deal rapidly with acute grading situations and a comprehensive Milking Management



evaluation of the interactions between cows, management, machines and environment to identify underlying causes of infection in your herd. This means you identify the real cause particular to your herd now and can do something in time to keep milk in the vat later.

**The current Fonterra SCC penalty structure makes keeping on top of mastitis worthwhile.** Things may change with the possibility of introducing milk-quality incentive payments for 2010 being aired. If this is the case then keeping on top of mastitis will be even more worthwhile.

*With Ross Beal and David Hawkins involved in training NZ dairy vets on how to manage mastitis and providing advice to the National Mastitis Advisory Committee, you have the resources and expertise locally where you need it. Give us a call.*



*So throw away the weights and enjoy more time out of the shed this summer.*

## Do Slow Cows Keep You in the Shed?

David Hawkins, BVSc

One of the hottest places to be during the summer is at the back end of a cow during milking time. You want to get through the job efficiently cool and so does the cow in front of you. Minimising time in the shed was the focus of a recent DairyNZ study. The findings show how setting a maximum time for milking can reduce average individual cow milking times by over 1 minute without compromising milk production or animal health.

### Study Groups

378 cows in a spring-calving pasture based herd and milked through a 40 bale rotary with Automatic Cup Removers (ACRs) were split into 4 groups:

1. ACR200 – cows milked with ACRs set to come off at 200ml/min
2. ACR400 – cows milked with ACRs set to come off at 400ml/min
3. MaxTEarly – cows milked with ACRs set at 200ml/min but only milked for a maximum of 7.5mins at the morning milking, or a maximum of 5.4mins at the evening milking
4. MaxTPeak – cows milked with the ACRs set at 200ml/min and after peak production subjected to the above maximum milking times. The maximum milking times were set based on the **herd average** production.

### Findings

ACR400 and MaxTEarly groups had shorter milking times in weeks 1-15. Strip yield in MaxTEarly cows was higher at week 12 but at week 27 there was no difference between the groups. There was a small increase in the SCC of cows in the ACR400 group (123,000) compared to the others (79,000 to 89,000). No differences were recorded in the numbers of clinical mastitis. Annual milk, fat and protein yield was the same across all treatment groups.

The authors, J Jago et al, concluded "Combining an ACR milk flow threshold setting with a maximum machine-on time... reduced milking duration without affecting milk production, clinical mastitis or SCC."

**The practical application in a herring bone shed is** to not wait for the last 2-3 cows in a row to milk out before changing cups. Rather once the majority of cows have milked out change the cups and get the row out of the shed. **Application in a rotary is to set the platform time** based on the herd average production and not to worry about sending slow cows around for the second rotation.



FRANKLINvets

# “No Hoof, No Horse!” Beware this Laminitis Season

Holly Walton BVSc

Laminitis, or founder refers, to disruption of the connective tissue between the hoof wall and the underlying pedal bone.

**When blood supply to this area is compromised** due to blood toxicity, the connective tissue or “laminae” loses its integrity and allows the pedal bone to rotate or sometimes sink through the sole. The deep digital flexor tendon that attaches to the pedal bone also begins to exert a stronger influence, exacerbating the pull of the bone downwards towards the sole.



**This is an extremely painful and sometimes life-threatening disease.** There are many causes of laminitis but at this time of the year we concentrate on overweight ponies with free access to pasture. Spring is a common time of the year for laminitis, as sugars in the grass become more accessible and upset the balance of gut bacteria causing “blood toxicity” that seeds to the feet. This problem

is exacerbated by the fact that many ponies now have ready access to improved pastures such as those developed for high-producing dairy farms.

Affected ponies and horses are very reluctant to move and often adopt a “saw-horse” stance, with forefeet out in front of the body and hind legs tucked under in an attempt to redistribute weight. They will also have strong pulses to the touch, either side of the pasterns.

**Veterinary treatment should be sought as soon as possible** to implement anti-inflammatory and ice therapy. Appropriate frog and sole support is also critical at this time. Anti-inflammatory drugs will have an anti-endotoxic effect which will reduce the amount of blood-borne toxins seeding to the feet. The horse or pony should be confined to a stall with generous amounts of soft bedding.

**We now do not recommend walking exercise during the initial phases of laminitis.** Contrary to popular belief this does not alleviate blood pooling to the feet it actually accelerates separation of the hoof wall from the pedal bone!

**X-rays are indicated in most cases of laminitis to assess** the degree of rotation or sinking of the pedal bone and assess depth of sole in

relation to the pedal bone. In severe and chronic cases, specialist corrective trimming and/or shoeing is essential. Some non-responsive cases may also require surgery to release the tension from the deep digital flexor tendon.

## Prevention

**At risk ponies should be** removed from pasture and yarded during the day with small amounts of hay. Hay should firstly be rinsed with water to remove excess sugars. There are now specialised feeds available that release energy slowly throughout the day and control hunger pangs, meaning a less grumpy little pony!

Most ponies are safe to graze on short pasture at night when grasses aren't photo-synthesising actively. The pony should be placed on dietary supplements BEFORE onset of laminitis to encourage good gut health. There are several probiotic formulations available for “at-risk” ponies.

**We are experiencing a particularly bad season with laminitis** in ponies *and* horses so please be vigilant with your feeding programmes. There are many products available to aid in the prevention of laminitis. We are happy to discuss these with you along with pasture management and exercise regimes.

Sponsors of Netball Counties Manukau Region supporting the Netball communities of Papakura, Pukekohe & Waiuku



Regional Sponsors of Auckland/Hauraki Dairy Industry Awards 2011



*Passion for Progression*

**PAPAKURA**  
Veterinary Hospital  
Farm Services and Supplies  
Ph 0-9-298 8575

**PUKEKOHE**  
Veterinary Hospital  
Farm Services and Supplies  
Ph 0-9-238 2471

**TAUPIRI**  
Veterinary Clinic  
Farm Services and Supplies  
Ph 0-7-824 6836

**TE KAUWHATA**  
Veterinary Clinic  
Farm Services and Supplies  
Ph 0-7-826 4838

**WAIUKU**  
Veterinary Hospital  
Farm Services and Supplies  
Ph 0-9-235 9101  
Farm A/H 0-9-238 2471

[www.franklinvets.co.nz](http://www.franklinvets.co.nz)

## Monitoring can save you \$\$\$

Facial eczema affects grazing ruminants and can be prevented.

Spore counts can be easily monitored by taking repeat pasture samples and having the spores counted at the clinic. Once dangerous threshold levels are reached, then prevention strategies can be implemented in a timely manner.

We offer free spore counting with all purchases of Face-Guard and Time Capsules.

Contact our rural sales managers Matthew Airey 0274 967 806 or Ross McDonald 0274 583 194 to discuss.

